

# Culture and Communities Committee

10.00am, Tuesday, 13 December 2022

## Response to motion by Councillor Thornley - Parks and Greenspace Investment

Executive/routine Wards Council Commitments	Routine All
---	----------------

### 1. Recommendations

---

- 1.1 It is recommended that Culture and Communities Committee:
  - 1.1.1 Note the progress made with condition surveys of parks infrastructure assets and with the investment in priority 01 projects;
  - 1.1.2 Acknowledge the costs associated with these schemes and the external funding secured to progress projects, particularly at Harlaw, Threipmuir and Bonaly;
  - 1.1.3 Recognise that the existing funding allocation will only cover priority 01 works; and
  - 1.1.4 Note that update reports on progress with the parks and greenspace investment programme will be reported to Committee on a six monthly basis.

**Paul Lawrence**

Executive Director of Place

Contact: Bob McAllister, Technical Manager

E-mail: [bob.mcallister@edinburgh.gov.uk](mailto:bob.mcallister@edinburgh.gov.uk)

# Report

## Response to motion by Councillor Thornley - Parks and Greenspace Investment

### 2. Executive Summary

---

- 2.1 This report provides details of the progress on the investment in parks and greenspace assets across the city.

### 3. Background

---

- 3.1 On [18 February 2021](#), the Council approved capital investment in parks and greenspaces of £4m. At the time of the funding being agreed, the parks and greenspace service also included cemeteries, so they have been incorporated within the investment programme.
- 3.2 This capital funding was additional to £1.95m of capital funding previously allocated to the service, over a 10 year period, to maintain outdoor assets within parks and cemeteries. This means that the total capital funding for investment in parks and greenspaces is £5.95m over the 10 year period. The service has allocated the funding as follows:
- 3.2.1 Park Asset Investment - £4.75m; and
- 3.2.2 Cemeteries Health and Safety Investment - £1.2m.
- 3.3 On [15 June 2021](#), Culture and Communities Committee approved progressing the works identified in this report as priority rated category 01 urgent (within one year) and priority category 02 essential (within two years), provided they could be contained within the capital budget allocation and any additional funding secured.
- 3.4 On 16 August 2022, Culture and Communities Committee agreed that regular updates on investment in parks and greenspaces would be provided in the form of a report. Committee also approved the following motion by Councillor Thornley. Committee:
- 3.4.1 Notes the report received by the Committee on Tuesday 15 June 2021 “Parks and Greenspace Investment”, in particular Appendix 7 (Ward Summary of Priority 01 and 02 Works).
- 3.4.2 Notes that the expected cost of works was identified as £9.1 million (point 4.13), of which £4.2 million were Priority 01 and 02, and that work was to be progressed on them following agreement of the report.

- 3.4.3 Notes that this was provisional on these works being contained within capital budget allocation and any external funding secured.
- 3.4.4 Requests a report, within two cycles, to update the Culture and Communities Committee on:
  - 3.4.4.1 Progress toward the completion of all works identified by ward, particularly those identified as Priority 01 and 02.
  - 3.4.4.2 How much of the cost for the works was sourced from capital budget allocation, how much from external funding, and how much if any has not been spent.
  - 3.4.4.3 The plan to deliver works identified as part of the £9.1 million, by ward, but that are not considered Priority 01 or 02.
- 3.5 A further motion by Councillor Thornley on Playparks Investment was approved by the Council on [22 September 2022](#), to be reported to Committee in two cycles. This report will be presented in March 2023.
- 3.6 In addition, on 22 September, a report was requested in response to a motion by Councillor Hyslop and an amendment by Councillor Walker on Safer Parks. This report is being prepared for presentation to Committee in March 2023.

## 4. Main report

---

### **Parks and Greenspace Infrastructure Surveys**

- 4.1 As reported to Committee in June 2021, to ensure the investment funding available is allocated based on need, Estate surveyors have been commissioned to survey and record the condition and safety of infrastructure assets within parks and greenspaces.
- 4.2 These visual surveys confirm to the Scottish Government methodology for asset condition surveying and provide an estimated asset investment cost (based on market rates) to repair the asset.
- 4.3 To date, surveys have been completed for 108 of the 193 parks and greenspace sites (56%).
- 4.4 All high priority parks and greenspace sites are complete and 48% of the medium priority sites have also been assessed. The priority of each location was identified based on the overall condition of the assets in each location.
- 4.5 Appendix 1 provides a list of sites and indicates the priority rating for each site, alongside the ward in which they are located and the current status of the survey.
- 4.6 Surveys for the remaining 35 medium priority sites are ongoing and these are expected to be concluded by March 2023. The final 50 low priority sites are forecast to be completed by the end of 2023.

## Asset Condition

- 4.7 To date, the surveys have identified 2,347 assets for investment. The latest estimated cost per priority rating is summarised in the following table:

Priority Rating	Description	Estimated Cost
01	Urgent work required within one year	£4,271,477
02	Essential work required within one to two years	£4,713,683
03	Desirable work required with three to five years	£3,743,866
04	Desirable work required over 5 years	£197,011

- 4.8 The estimated costs above are indicative only and will be subject to market conditions when work is tendered.

## Progress Update on Investment Works

- 4.9 Appendix 2 provides an update in respect of projects that have been completed and are those in progress.
- 4.10 The table highlights that the works progressed to date have been predominantly paid for by the Council, as limited external and third-party funding has so far been secured to support delivery of these projects. However, officers will continue to seek external funding for these improvements where it is possible to do so.
- 4.11 To date, 95 individual actions have been progressed, with 62 progressed since the last update to Committee [in February 2022](#). The total cost of these projects is £2.2m. Path works within Canongate Kirkyard (£0.2m) have also been approved taking the total committed spend over the last two years to £2.4m.

## Capital and Revenue Investment

- 4.12 While recognising that there are many parks and greenspace assets requiring investment, the only works eligible for inclusion in the investment programme are those costing over £10,000 (gross). This restricts spend to the remediation of high-value assets or a series of lower-value assets that are linked together to form a larger project (for example, the individual replacement waste a bin in parks and greenspaces is £559, however when combined across the parks and greenspace estate, the value was £57,856).
- 4.13 The remediation of lower-value assets (<£10,000) must be funded through revenue budgets.

## Upcoming Investment

- 4.14 Appendix 3 shows the next phase of projects to be progressed. The estimated value of those projects is £2.3m, of which £1.2m is funded from the Council's capital investment in parks and greenspaces, with the balance of £1.1m coming from other funding sources.
- 4.15 After allocation of funds to planned, ongoing and completed priority 01 works, the balance remaining of funding agreed by the Council is £1.35m.

- 4.16 It is highly likely that this funding will be required to complete any priority 01 works which are found as the remaining asset surveys are completed. It is also possible that this amount may not be sufficient to meet the cost of any new priority 01 works identified in the upcoming surveys.
- 4.17 In addition, recent economic instability has increased costs. Given this and the number of priority 01 work already committed and planned, only further priority 01 works can be considered for investment within the funding available, although in isolated cases, there may be justification in delivering priority 02 works where they overlap with priority 01 works.
- 4.18 This means that, although Parks Officers routinely receive suggestions for parks improvements, the existing funding is only sufficient to deliver the priority 01 projects identified both now and anticipated in the future. Officers will continue to support delivery of other suggestions where possible, with external funding if available.

### **External Funding**

- 4.19 As shown in Appendix 3, a small number of upcoming projects have attracted third-party funding.
- 4.20 The largest external funding allocation to date is from the Rural Development Trust to improve car parking facilities within Natural Heritage areas of the city, specifically car parks located at Harlaw and Threipmuir. This upcoming project upgrades and extends parking areas, reduces the danger and damage caused by overcrowding and poor parking, provides toilet facilities, bike parking, bike pump and repair, and generally improves access to popular countryside areas. An added benefit will be income from parking fees to offset operating costs in the Pentland Hills Regional Park and, potentially, also fund improvements. Grants of £555,834 have been secured for a capital investment of £118,548 and an in-kind investment of £69,698.
- 4.21 Additional funding of £207,886 has recently been secured for similar upgrades to Bonaly car park, with capital investment of £89,094.
- 4.22 Appendix 4 highlights a selection of asset investment projects that have progressed, showing asset condition before and after works have been completed.

## **5. Next Steps**

---

- 5.1 Parks and greenspace asset investment will continue, prioritising assets where failure will present a potential danger to the public and staff, and which could result in the closure of grounds. These will be progressed by Council staff and using procurement contracts and frameworks, as appropriate.
- 5.2 While much of the work is unlikely to attract additional investment, opportunities will continue to be progressed from external sources (including for example planning-led developer contributions, community fundraising and third-party grants). Conversations with Edinburgh and Lothians Greenspace Trust are ongoing on how they might assist in leveraging additional third party funding.

- 5.3 The sustainability of remediation works will be a key feature and solutions will be developed to meet the long-term placemaking aspirations and development plans for each site.
- 5.4 The programme to ensure that all of the parks and greenspace infrastructure assets have been surveyed will continue. At present, it is anticipated that the programme will be completed by the end of 2023.
- 5.5 Regular updates on parks and greenspace investment will be presented to Committee on a six monthly basis.
- 5.6 Reports in response to the actions agreed at the Council meeting on 22 September 2022 on Playparks Investment and Safer Parks will be presented to Committee in March 2023.

## **6. Financial impact**

---

- 6.1 As noted in the background section of this report, the Council has identified £5.95m of capital funding for the delivery of investment in parks and greenspace infrastructure.
- 6.2 The current estimate for priority 01 and 02 rated asset investment work is £9m. This will increase as more parks and greenspace surveys are completed and investment estimates improve.
- 6.3 Some external funding has been secured, as outlined above and in Appendices 2 and 3.
- 6.4 Asset investments that do not meet the capital de minimis of £10,000 will be funded through revenue budgets where possible.

## **7. Stakeholder/Community Impact**

---

- 7.1 There are significant health and safety and service delivery failure implications by not addressing the maintenance and remediation needs of infrastructure assets.
- 7.2 Failure of assets will have a negative impact on the recreation value and accessibility of the city's greenspace.

## **8. Background reading/external references**

---

- 8.1 Previous progress update – Culture and Communities Committee Business Bulletin, [1 February 2022](#).

## **9. Appendices**

---

- 9.1 Appendix 1 – Progress of Parks and Greenspace Asset Surveys.

- 9.2 Appendix 2 – Asset Investment Ongoing and Completed.
- 9.3 Appendix 3 – Asset Investment Planned.
- 9.4 Appendix 4 – Asset Investment Examples.

PRIORITY	STATUS	SITE REF	SITE NAME	WARD NO.	CONDITION SURVEY REFERENCE
1_MEDIUM	COMPLETED - IC	SIT0006	ABERCORN PARK	17	CS001723
2_HIGH	COMPLETED - JF	SIT0019	ALLISON PARK	1	CS001531
0_LOW	NOT STARTED	SIT0215	ATHOLL CRESCENT	11	
1_MEDIUM	COMPLETED - IC	SIT1652	BALGREEN PARK	6	CS001744
1_MEDIUM	COMPLETED - IC	SIT0035	BALGREEN TO CORSTORPHINE WALKWAY	6	CS001712
1_MEDIUM	COMPLETED - IC	SIT0587	BARONSCOURT PARK	14	CS001743
0_LOW	NOT STARTED	SIT1732	BELLEVUE CRESCENT GARDENS NORTH	11	
0_LOW	NOT STARTED	SIT0058	BELLEVUE CRESCENT GARDENS SOUTH	11	
1_MEDIUM	NOT STARTED	SIT0062	BINGHAM PARK	17	
0_LOW	NOT STARTED	SIT0069	BLACKFORD HILL	15	
0_LOW	NOT STARTED	SIT0077	BLINKBONNY PARK	2	
0_LOW	NOT STARTED	SIT0078	BLOOMIEHALL PARK	2	
0_LOW	NOT STARTED	MULTIPLE	BONALY COUNTRY PARK (PENTLAND HILLS REGIONAL PARK)	8 and 2	
0_LOW	NOT STARTED	SIT0094	BRAID HILLS GOLF COURSE	10	
1_MEDIUM	COMPLETED - JM	SIT0096	BRAIDBURN VALLEY PARK	10	CS001688
1_MEDIUM	COMPLETED - IC	SIT0102	BRIGHTON PARK	17	CS001724
1_MEDIUM	NOT STARTED	SIT1737	BRUNSTANE MILL PARK	17	
0_LOW	NOT STARTED	SIT1200	BRUNTSFIELD LINKS EAST	10	
0_LOW	COMPLETED - 2019 SURVEY USED	SIT0119	BRUNTSFIELD LINKS WEST	10	CS001405
1_MEDIUM	NOT STARTED	SIT0125	BUCKSTONE WOODS	8	
2_HIGH	COMPLETED - JF	MULTIPLE	BURDIEHOUSE BURN LOCAL NATURE RESERVE (INCLUDING ELLEN'S GLEN)	16	CS001695
0_LOW	NOT STARTED	SIT0351	BUTTERCUP FARM PARK	3	
2_HIGH	COMPLETED - IC	SIT0133	CAIRNTOWS PARK	17	CS001647
1_MEDIUM	NOT STARTED	SIT0141	CALTON HILL	11	
1_MEDIUM	NOT STARTED	SIT0147	CAMMO ESTATE	1	
1_MEDIUM	COMPLETED - JM	SIT0148	CAMPBELL PARK	8	CS001674
0_LOW	COMPLETED - 2019 SURVEY USED	SIT0178	CASTLE TERRACE GARDENS	11	CD001386
2_HIGH	COMPLETED - JM	SIT1248	CLERMISTON PARK	3	CS001582
0_LOW	NOT STARTED	SIT0028	COATES CRESCENT	11	
2_HIGH	COMPLETED - JM	SIT0231	COLINTON DELL	9	CS001607
2_HIGH	COMPLETED - JM	SIT1575	COLINTON DELL - PART OF SLATEFORD BALERNO WALKWAY	8	CS001607
2_HIGH	COMPLETED - JM	SIT1531	GROUND	8	CS001664
2_HIGH	COMPLETED - JM	SIT0236	COLINTON MAINS PARK	8	CS001623
1_MEDIUM	NOT STARTED	SIT0248	CORSTORPHINE HILL LOCAL NATURE RESERVE	3, 5, 6	CS001757
2_HIGH	COMPLETED - JM	SIT1729	CRAIGLOCKHART DELL	9	CS001596
1_MEDIUM	NOT STARTED	SIT1743	CRAIGLOCKHART WOODS	9	
0_LOW	NOT STARTED	SIT0283	CRAIGMILLAR CASTLE JUBILEE PARK	17	
0_LOW	NOT STARTED	SIT0691	CRAMOND FORESHORE	1	
1_MEDIUM	NOT STARTED	SIT0298	CRAMOND WALLED GARDEN	1	
1_MEDIUM	NOT STARTED	SIT1725	CURRIEMUIREND PARK	2	
0_LOW	COMPLETED - 2019 SURVEY USED	SIT0324	DALMENY STREET PARK	12	CS001354
0_LOW	NOT STARTED	SIT0339	DAVIDSON'S MAIN'S PARK	1	
0_LOW	NOT STARTED	SIT1150	DEACONESS GARDEN	15	
0_LOW	NOT STARTED	SIT0447	DONKEYFIELD COMMUNITY ORCHARD	17	
0_LOW	NOT STARTED	SIT0610	DOVECOT PARK (KINGSKNOWE)	2	
1_MEDIUM	NOT STARTED	SIT1250	DRUM BRAE PARK	3	
2_HIGH	COMPLETED - JM	SIT0353	DRUM PARK	16	CS001625
0_LOW	NOT STARTED	SIT0374	DUNBAR'S CLOSE GARDENS	11	
1_MEDIUM	NOT STARTED	SIT0375	DUNDAS PARK (SQ)	1	
1_MEDIUM	IN PROGRESS	SIT0385	EAST PILTON PARK	4	
2_HIGH	COMPLETED - IC	SIT0386	EAST PRINCES STREET GARDENS	11	CS001609
0_LOW	NOT STARTED	SIT0277	EASTER CRAIGLOCKHART HILL LOCAL NATURE RESERVE	9	
1_MEDIUM	NOT STARTED	SIT0390	EASTER DRYLAW PARK	5	
1_MEDIUM	COMPLETED - JF	SIT1730	ELLEN'S GLEN (INCLUDED IN BURDIEHOUSE LOCAL NATURE RESERVE)	16	CS001695
0_LOW	NOT STARTED	SIT0403	FAIRMILEHEAD PARK	8	
2_HIGH	COMPLETED - IC	SIT0405	FAULDBURN PARK	3	CS001636
2_HIGH	COMPLETED - JF	SIT0409	FERNIEHILL COMMUNITY PARK	16	CS001644
2_HIGH	COMPLETED - JF	SIT0411	FERNIESIDE RECREATION GROUND	16	CS001645
2_HIGH	COMPLETED - JM	SIT0412	FERRY GLEN AND BACK BRAES	1	CS001576
1_MEDIUM	COMPLETED - IC	SIT1744	FIGGATE PARK EAST (FIGGATE BURN PARK)	14	CS001730
1_MEDIUM	COMPLETED - IC	SIT0419	FIGGATE PARK WEST (FIGGATE BURN PARK)	14	CS001733
1_MEDIUM	COMPLETED - JF	SIT1735	FOUNTAINBRIDGE GREEN	9	CS001748



PRIORITY	STATUS	SITE REF	SITE NAME	WARD NO.	CONDITION SURVEY REFERENCE
1_MEDIUM	COMPLETED - JF	SIT0441	GARDNER'S CRESCENT	9	CS001747
1_MEDIUM	NOT STARTED	SIT0442	GAYFIELD SQUARE	11	
1_MEDIUM	COMPLETED - IC	SIT0953	GLENDDEVON PARK	6	CS001713
0_LOW	NOT STARTED	SIT0327	GORGIE/DALRY COMMUNITY PARK	7	
1_MEDIUM	COMPLETED - JF	SIT1731	GRACEMOUNT COMMUNITY PARK	16	CS001721
0_LOW	NOT STARTED	SIT1738	GRANNY'S GREEN	11	
1_MEDIUM	IN PROGRESS	SIT1726	GRANTON CRESCENT PARK	4	
1_MEDIUM	COMPLETED - IC	SIT0504	GYLE PUBLIC PARK & RECREATION GROUND	3	CS001690
0_LOW	NOT STARTED	SIT0506	GYPSY BRAE RECREATION GROUND	4	
0_LOW	NOT STARTED	SIT0508	HAILES QUARRY PARK	7	
0_LOW	NOT STARTED	SIT0837	REGIONAL PARK)	2	
0_LOW	NOT STARTED	SIT1594	HARRISON PARK EAST	9	
0_LOW	NOT STARTED	SIT0519	HARRISON PARK WEST	9	
1_MEDIUM	NOT STARTED	SIT0092	HAUGH PARK	1	
0_LOW	NOT STARTED	SIT0286	HAWKHILL WOODS	17	
2_HIGH	COMPLETED - IC	SIT1741	HAYS PARK	16	CS001612
2_HIGH	COMPLETED - IC	SIT1179	HENDERSON GARDENS	4	CS001572
1_MEDIUM	NOT STARTED	SIT0539	HERMITAGE OF BRAID	10	
1_MEDIUM	COMPLETED - IC	SIT0550	HILL SQUARE GARDEN	15	CS001725
0_LOW	COMPLETED - 2019 SURVEY USED	SIT0551	HILLSIDE CRESCENT GARDENS	12	CS001340
0_LOW	NOT STARTED	SIT0558	HOPETOUN CRESCENT GARDENS	12	
2_HIGH	COMPLETED - JM	SIT0563	HUNTERS HALL PARK (JACK KANE)	17	CS001469
2_HIGH	COMPLETED - IC	SIT0569	INCH PARK	16	CS001618
1_MEDIUM	NOT STARTED	SIT0571	INCHCOLM PARK (SOUTH QUEENSFERRY)	1	
1_MEDIUM	NOT STARTED	SIT1424	INVERLEITH PARK	5	
2_HIGH	COMPLETED - IC	SIT0063	JEWEL PARK	17	CS001648
2_HIGH	COMPLETED - IC	SIT0593	JOPPA QUARRY PARK	17	CS001649
1_MEDIUM	COMPLETED - IC	SIT0602	KEDDIE PARK	12	CS001749
1_MEDIUM	NOT STARTED	SIT0603	KING GEORGE V CURRIE	2	
0_LOW	NOT STARTED	SIT0604	KING GEORGE V EYRE PLACE	5	
0_LOW	NOT STARTED	SIT0560	KING GEORGE V SOUTH QUEENSFERRY	1	
2_HIGH	COMPLETED - JM	SIT0638	LAURISTON CASTLE	1	CS001577
2_HIGH	COMPLETED - IC	SIT0652	LEITH LINKS EAST	4	CS001523
2_HIGH	COMPLETED - IC	SIT0651	LEITH LINKS WEST	4	CS001519
0_LOW	COMPLETED - 2019 SURVEY USED	SIT0661	LIBERTON PARK	16	CS001362
1_MEDIUM	COMPLETED - JF	SIT1733	LITTLE FRANCE PARK	17	CS001610
1_MEDIUM	NOT STARTED	SIT0668	LOCHEND PARK	14	
0_LOW	COMPLETED - 2019 SURVEY USED	SIT0935	LONDON ROAD GARDENS	11	CS001341
1_MEDIUM	NOT STARTED	SIT1708	MAGDALENE GLEN	17	
0_LOW	NOT STARTED	SIT0518	MALLENY BING	2	
0_LOW	NOT STARTED	SIT1747	MALLENY BOWL	2	
0_LOW	NOT STARTED	SIT1467	MALLENY PARK	2	
1_MEDIUM	NOT STARTED	SIT0217	MARCHBANK PARK	2	
2_HIGH	COMPLETED - JM	SIT0705	MEADOWFIELD PARK	14	CS001624
2_HIGH	COMPLETED - Q&A	SIT0706	MEADOWS YARD LOCAL NATURE RESERVE	14	CS001661
0_LOW	NOT STARTED	SIT0707	MEADOWSPOT PARK	9	
0_LOW	COMPLETED - 2019 SURVEY USED	SIT0720	MONTGOMERY STREET PARK	12	CS001339
2_HIGH	COMPLETED - IC	SIT1184	MOREDUN PARK (GILMERTON)	16	CS001639
0_LOW	NOT STARTED	SIT0126	MOREDUN WOODS	16	
1_MEDIUM	COMPLETED - JF	SIT1683	MORGAN PLAYING FIELDS	15	CS001717
1_MEDIUM	COMPLETED - JM	SIT0733	MORNINGSIDE PARK	10	TBC
1_MEDIUM	COMPLETED - JF	SIT1523	MORTONHALL COMMUNITY PARK	16	CS001714
0_LOW	NOT STARTED	SIT0744	MUIR WOOD PARK	2	
1_MEDIUM	NOT STARTED	SIT0742	MUIRHOUSE LINEAR PARK PHASE 1	4	
1_MEDIUM	NOT STARTED	MULTIPLE	MUIRHOUSE LINEAR PARK PHASE 2	4	
0_LOW	NOT STARTED	SIT0745	MURISTON PARK	7	
1_MEDIUM	COMPLETED - JF	SIT0768	NEWCRAIGHALL PARK	17	CS001722
0_LOW	COMPLETED - 2019 SURVEY USED	SIT0782	NICOLSON SQUARE GARDEN	15	CS001270
2_HIGH	COMPLETED - IC	SIT1646	ORCHARD BRAE PARK NORTH	5	CS001570
2_HIGH	COMPLETED - IC	SIT0815	ORCHARD BRAE PARK SOUTH	5	CS001571
0_LOW	NOT STARTED	SIT1650	PARKSIDE PARK (NEWBRIDGE)	1	
0_LOW	NOT STARTED	SIT0830	PATIE'S ROAD RECREATION GROUND	9	
0_LOW	NOT STARTED	SIT0317	PENTLAND VIEW PARK	2	
2_HIGH	COMPLETED - JM	SIT1739	PIKES POOL	1	TBC
2_HIGH	COMPLETED - MK	SIT0849	PILRIG PARK	12	CS001640

PRIORITY	STATUS	SITE REF	SITE NAME	WARD NO.	CONDITION SURVEY REFERENCE
2_HIGH	COMPLETED - Q&A	SIT0347	PORTOBELLO COMMUNITY GARDEN	17	CS001689
0_LOW	NOT STARTED	SIT0869	PORTOBELLO PARK / GOLF COURSE	17	
1_MEDIUM	NOT STARTED	SIT0878	PRESTONFIELD PARK	15	
1_MEDIUM	COMPLETED - IC	SIT0898	RATHO PARK	2	CS001704
1_MEDIUM	COMPLETED - IC	SIT1365	RATHO STATION PARK	1	CS001705
1_MEDIUM	COMPLETED - IC	SIT0669	RATHO STATION RECREATION GROUND	1	CS001706
1_MEDIUM	NOT STARTED	SIT0902	RAVELSTON PARK	5	
1_MEDIUM	NOT STARTED	SIT1745	RAVELSTON WOODS	5	
0_LOW	NOT STARTED	SIT1366	REDBRAES PARK	12	
0_LOW	NOT STARTED	SIT1581	REDFORD WOODS	8	
1_MEDIUM	COMPLETED - JM	SIT0907	REDHALL PARK	7	CS001693
1_MEDIUM	COMPLETED - IC	SIT0908	REGENT ROAD PARK	11	CS001696
2_HIGH	COMPLETED - IC	SIT0912	RIVER ALMOND WALKWAY	1	CS001583
1_MEDIUM	COMPLETED - IC	SIT1651	RIVERSIDE PARK	1	CS001699
2_HIGH	COMPLETED - IC	SIT1717	ROCHEID PATH	5	CS001677
2_HIGH	COMPLETED - JM	SIT0927	ROSEBURN PARK	6	CS001619
2_HIGH	COMPLETED - MK	SIT0929	ROSEFIELD PARK	17	CS001635
0_LOW	COMPLETED - 2019 SURVEY USED	SIT0946	SAUGHTON PARK	7	CS001431
2_HIGH	COMPLETED - JM	SIT1519	SEAFIELD RECREATION GROUND	14	CS001621
1_MEDIUM	NOT STARTED	SIT0959	SEAFIELD WALKWAY	4	
2_HIGH	COMPLETED - MK	SIT1057	SEVEN ACRE PARK (LEASED FOR GRAZING)	16	CS001628
1_MEDIUM	COMPLETED - JF	SIT0975	SIGHTHILL PARK	7	CS001698
0_LOW	NOT STARTED	SIT1724	SILVERKNOWES PARK / GOLF COURSE	1	
1_MEDIUM	IN PROGRESS	MULTIPLE	SOUTH MEADOW WALK	10	
2_HIGH	COMPLETED - IC	MULTIPLE	SOUTH QUEENSFERRY WALKWAY	1	CS001581
2_HIGH	COMPLETED - JM	SIT1017	SPYLAW PARK	8	CS001601
0_LOW	NOT STARTED	SIT1660	ST KATHARINE'S PARK	16	
2_HIGH	COMPLETED - JM	SIT1041	ST MARGARET'S PARK	6	CS001620
1_MEDIUM	NOT STARTED	SIT1043	ST MARK'S PARK	12	
2_HIGH	COMPLETED - IC	SIT1052	ST PATRICK SQUARE	15	CS001608
2_HIGH	COMPLETED - JM	SIT1057	STAINDYKEHEAD SEVEN ACRE PARK	16	CS001628
0_LOW	NOT STARTED	SIT1059	STARBANK PARK	4	
2_HIGH	COMPLETED - JM	SIT0679	STATION ROAD PARK	1	CS001575
1_MEDIUM	NOT STARTED	SIT1728	STENHOUSE PLACE EAST PARK	7	
2_HIGH	COMPLETED - IC	SIT1734	STRAITON PLACE PARK	17	CS001611
1_MEDIUM	COMPLETED - IC	SIT1077	TAYLOR GARDENS	4	CS001756
1_MEDIUM	IN PROGRESS	SIT0382	THE MEADOWS	10	CS001767
0_LOW	NOT STARTED	SIT1094	TORPHIN QUARRY (PENTLAND HILLS REGIONAL PARK)	8	
2_HIGH	COMPLETED - JM	SIT1033	TREVERLEN PARK	17	TBC
1_MEDIUM	COMPLETED - IC	SIT1106	UNION PARK	6	CS001711
1_MEDIUM	COMPLETED - IC	SIT1111	VICTORIA PARK	4	CS001750
2_HIGH	COMPLETED - IC	SIT1772	WATER OF LEITH WALKWAY - BAIRD DRIVE (102) TO RIVERSDALE CRESCENT (14)	6	CS001672
2_HIGH	COMPLETED - IC	SIT1774	WATER OF LEITH WALKWAY - BELLS BRAE (15) TO MILLER ROW (12)	5	CS001598
2_HIGH	COMPLETED - JM	SIT0983	WATER OF LEITH WALKWAY - BLINKBONNY ROAD (BROOKLEA) TO WOODHALL MILLBRAE (39)	N/A	CS001675
2_HIGH	COMPLETED - IC	SIT1780	WATER OF LEITH WALKWAY - CANONMILLS (32) TO WARRISTON ROAD (15)	N/A	CS001687
2_HIGH	COMPLETED - IC	SIT1125	WATER OF LEITH WALKWAY - COLTBRIDGE AVENUE (64) TO DAMSIDE (2)	5	CS001597
2_HIGH	COMPLETED - IC	SIT1778	WATER OF LEITH WALKWAY - DAMSIDE (2) TO BELLS BRAE (15)	11	CS001678
2_HIGH	COMPLETED - JM	SIT1770	WATER OF LEITH WALKWAY - ELS HOUSE, GORGIE ROAD TO LANARK ROADX (24)	N/A	TBC
2_HIGH	COMPLETED - IC	SIT1375	WATER OF LEITH WALKWAY - FORDS ROAD (62) TO ELS HOUSE, GORGIE ROAD	7	CS001671
2_HIGH	COMPLETED - JM	SIT1576	WATER OF LEITH WALKWAY - GILLESPIE ROAD TO SPYLAW BANK ROAD	N/A	TBC
2_HIGH	COMPLETED - IC	SIT1781	WATER OF LEITH WALKWAY - INVERLEITH TERRACE LANE (20) TO BRANDON TERRACE CONVENIENCES	N/A	CS001683
2_HIGH	COMPLETED - JM	SIT1691	WATER OF LEITH WALKWAY - KIRKGATE (3) TO KILEITH MILL ROAD (1)	N/A	CS001676
2_HIGH	COMPLETED - IC	SIT1028	WATER OF LEITH WALKWAY - MILLER ROW (12) TO MACKENZIE PLACE AT ST BERNARDS BRIDGE	11	CS001599
2_HIGH	COMPLETED - JM	SIT1773	WATER OF LEITH WALKWAY - PAPES COTTAGES TO COLTBRIDGE AVENUE (64)	N/A	TBC

## APPENDIX 1 - PROGRESS OF PARKS AND GREENSPACE ASSET SURVEYS

PRIORITY	STATUS	SITE REF	SITE NAME	WARD NO.	CONDITION SURVEY REFERENCE
2_HIGH	COMPLETED - IC	SIT1779	WATER OF LEITH WALKWAY - SAUNDERS STREET AT ST BERNARDS BRIDGE TO KERRS STREET AT JUBILEE PARK	N/A	CS001600
2_HIGH	COMPLETED - IC	SIT1775	WATER OF LEITH WALKWAY - ST BERNARDS ROW (15) TO KERR STREET	N/A	CS001682
2_HIGH	COMPLETED - IC	SIT0486	WATER OF LEITH WALKWAY - WARRISTON ROAD (15) TO COMMERCIAL STREET (2)	N/A	CS001668
2_HIGH	COMPLETED - JM	SIT1769	WATER OF LEITH WALKWAY - WEST MILL ROAD (10) TO GILLESPIE ROAD (8)	N/A	CS001685
2_HIGH	COMPLETED - JM	SIT1777	WATER OF LEITH WALKWAY - WEST MILL ROAD TO WEST MILL BANK	N/A	CS001667
2_HIGH	COMPLETED - IC	SIT1771	WATER OF LEITH WALKWAY - WESTFIELD AVENUE (22) TO STEVENSON AVENUE (22)	7	CS001686
2_HIGH	COMPLETED - JM	SIT1776	WATER OF LEITH WALKWAY - WOODHALL MILLBRAE TO LANARK ROAD (467)	N/A	CS001684
1_MEDIUM	NOT STARTED	SIT1145	WEST PILTON PARK	4	
2_HIGH	COMPLETED - IC	SIT1147	WEST PRINCES STREET GARDEN	11	CS001613
1_MEDIUM	NOT STARTED	SIT1736	WESTER CRAIGLOCKHART HILL	9	
0_LOW	NOT STARTED	SIT1715	WHINHILL PARK	7	
0_LOW	NOT STARTED	SIT1169	WHITE PARK	7	

## APPENDIX 2 - ASSET INVESTMENT ONGOING AND COMPLETED

Site	Ward	Project / Status	Parks Capital	Other funding	Project Value
Ferry Glen	1	Design replacement bridge / Completed Mar 22	£ 5,745	£ -	£ 5,745
Hawthornbank	1	Refurbish walls / Completed Jul 22	£ 10,790	£ -	£ 10,790
Lauriston Castle	1	Refurbish outhouse / Completed Mar 22	£ 18,507	£ -	£ 18,507
Lauriston Castle	1	Refurbish tea house / Due Nov 22	£ 17,153	£ -	£ 17,153
Pike's Pool	1	Refurbish path network / Completed Nov 21	£ 23,870	£ -	£ 23,870
Ravelston Dykes Cycle Path	1	Refurbish fencing / Completed Mar 22	£ 17,023	£ -	£ 17,023
River Almond	1	Refurbish path network / steps / Completed Jan 22	£ 17,258	£ -	£ 17,258
Station Road Park	1	Refurbish path network / Completed Jun 22	£ 68,834	£ -	£ 68,834
Malleny Park	2	Refurbish car park / Completed Nov 21	£ 24,375	£ 24,000	£ 48,375
Pentland Hills Regional Park - Harlaw, Bonaly Threipmuir, (Flotterstone)	2	Design - new car park areas / Due Nov 22	£ 69,724	£ -	£ 69,724
Pentland Hills Regional Park - Harlaw, Bonaly Threipmuir, (Flotterstone)	2	New car park areas - project management / Due Mar 23	£ 32,378	£ -	£ 32,378
Spylaw Park	2	Assess walls conditions / Completed Nov 21	£ 600	£ -	£ 600
Water Of Leith - 61 Hailes Garden	2	Refurbish walls / Completed Oct 21	£ 13,870	£ 13,870	£ 27,740
Water Of Leith - Balerno	2	Demolish bridge / Completed Jan 22	£ 23,900	£ -	£ 23,900
Victoria Park	4	Community garden - community engagement / Completed Oct 21	£ 1,695	£ -	£ 1,695
Victoria Park	4	Refurbish artificial pitch / Completed Jan 22	£ 24,268	£ -	£ 24,268
Victoria Park	4	Refurbish Edward VII Memorial / Due Nov 22	£ 20,330	£ -	£ 20,330
Balgreen Walkway	5	New safety fencing / Completed Feb 22	£ 9,996	£ -	£ 9,996
Inverleith Park	5	Refurbish safety surface / Completed Jan 22	£ 10,631	£ -	£ 10,631
Inverleith Park	5	Drainage design option appraisal / Completed Mar 22	£ 1,889	£ -	£ 1,889
Inverleith Park	5	Refurbish boardwalk / Completed Mar 22	£ 43,977	£ -	£ 43,977
Inverleith Park	5	Drainage upgrade / Completed Mar 22	£ 144,820	£ -	£ 144,820
St Mark's Park	5	Refurbish fencing / Due Nov 22	£ 30,406	£ -	£ 30,406
Warriston Allotment	5	Refurbish fencing / Completed Mar 22	£ 30,163	£ -	£ 30,163
Water Of Leith - Damside	5	Refurbish bridge / Completed Jun 21	£ 20,300	£ -	£ 20,300
Water Of Leith - Miller Row	5	Refurbish walls - design / project manage / Completed Oct 22	£ 18,699	£ -	£ 18,699
Corstorphine Hill Local Nature Reserve	6	Preliminary enabling works for path network / Completed Mar 22	£ 7,034	£ -	£ 7,034
St Margaret's Park	6	Refurbish car park / Completed Dec 21	£ 32,274	£ -	£ 32,274
Hailes Quarry Park	7	Refurbish path network / Completed Apr 22	£ 14,614	£ -	£ 14,614
Saughton Park	7	Refurbish walls / Completed Feb 22	£ 19,565	£ -	£ 19,565
Campbell Park	8	New safety fencing / Completed Nov 21	£ 10,415	£ -	£ 10,415
Campbell Park	8	New path network / Completed Jun 22	£ 56,650	£ -	£ 56,650

## APPENDIX 2 - ASSET INVESTMENT ONGOING AND COMPLETED

Site	Ward	Project / Status	Parks Capital	Other funding	Project Value
Dells	8	Landslip - design solutions / Ongoing	£ 35,471	£ -	£ 35,471
Fairmilehead Park	8	Refurbish fencing / Completed Jun 22	£ 11,686	£ -	£ 11,686
Paties Road Recreation Ground	8	Refurbish car park phase one / Completed Jan 22	£ 32,496	£ -	£ 32,496
Paties Road Recreation Ground	8	Refurbish car park phase two / Completed Jul 22	£ 3,445	£ -	£ 3,445
Water of Leith - Dells	8	Design & project manage bridges / Completed Mar 22	£ 37,170	£ -	£ 37,170
Blackford Glen	10	Refurbish path network / Completed Jan 22	£ 12,820	£ -	£ 12,820
Braid Hills	10	Refurbish fencing / Completed May 22 inc. Regent Road	£ -	£ -	£ -
Braidburn Valley Park	10	Remove foundations / Completed May 22	£ 28,241	£ -	£ 28,241
Braidburn Valley Park	10	Refurbish fencing / Completed Feb 22	£ 19,384	£ -	£ 19,384
Braidburn Valley Park	10	Refurbish path network and gabions / Completed Feb 22	£ 18,711	£ -	£ 18,711
Calton Hill	11	Refurbish path network / Completed Nov 21	£ 10,651	£ -	£ 10,651
Calton Hill	11	Refurbish path network / Completed Jan 22	£ 45,582	£ -	£ 45,582
Calton Hill	11	Refurbish wall / Completed Feb 22 inc. Braidburn Valley	£ -	£ -	£ -
Gayfield Square	11	Refurbish fencing / Completed Mar 22	£ 19,522	£ -	£ 19,522
Regent Road Park	11	Refurbish fencing / Completed May 22	£ 16,227	£ -	£ 16,227
Dalmeny Street Park	12	Refurbish path network / Completed Mar 22 inc. Joppa Quarry	£ -	£ -	£ -
Dalmeny Street Park	12	Refurbish fencing / Completed Feb 22	£ 69,133	£ -	£ 69,133
Heriot Hill Terrace	12	Refurbish walls / Completed Feb 22	£ 17,420	£ -	£ 17,420
Keddie Gardens	12	Refurbish wall / Completed Feb 22 inc. Heriot Hill Ter	£ -	£ -	£ -
Montgomery Street Park	12	Refurbish fencing / Completed Dec 21	£ 11,918	£ -	£ 11,918
Montgomery Street Park	12	Refurbish path network / Completed Mar 22 inc. Joppa Quarry	£ -	£ -	£ -
Leith Links (East)	13	Refurbish path network / Completed Mar 22	£ 17,915	£ -	£ 17,915
Water of Leith - 12 Bonnington Rd	13	Refurbish walls / Completed May 22	£ 20,750	£ -	£ 20,750
Abercorn Park	14	Refurbish fencing / Completed Dec 21	£ 22,684	£ -	£ 22,684
Lochend Park	14	Upgrade drainage / Completed Dec 21	£ 34,798	£ -	£ 34,798
Lochend Park	14	Refurbish walls / Completed Mar 22	£ 14,040	£ -	£ 14,040
Lochend Park	14	Refurbish path network / Completed Aug 22	£ 49,017	£ -	£ 49,017
Deaconess Gardens	15	Refurbish fencing / Completed Mar 22	£ 45,263	£ -	£ 45,263
Inch Park	15	Refurbish walls / Completed Mar 22	£ 31,410	£ -	£ 31,410
Inch Park	15	Refurbish storage building roof / Completed Jun 22	£ 30,799	£ -	£ 30,799
Inch Park	15	Refurbish manhole and road / Completed Mar 22	£ 10,974	£ -	£ 10,974
Inch Park	15	Refurbish walls / Completed Mar 22	£ 6,945	£ -	£ 6,945
Inch Park	15	Remediate contaminated area and path network / Completed Mar 22	£ 18,905	£ -	£ 18,905
Inch Park	15	Refurbish roof / Completed Jul 22	£ 12,646	£ -	£ 12,646
Inch Park	15	Refurbish glasshouse / Completed Mar 22	£ 17,951	£ -	£ 17,951

## APPENDIX 2 - ASSET INVESTMENT ONGOING AND COMPLETED

Site	Ward	Project / Status	Parks Capital	Other funding	Project Value
Inch Park	15	Refurbish left-side gable end / Completed Jul 22	£ 11,753	£ -	£ 11,753
Inch Park	15	Plumbing and electrical safety works / Completed Jul 22	£ 17,468	£ -	£ 17,468
Inch Park	15	Refurbish entrance path network / Completed Mar 22	£ 11,147	£ -	£ 11,147
Inch Park	15	Electrical safety works / Due Oct 22	£ 11,799	£ -	£ 11,799
Inch Park	15	Refurbish walls / Completed Jun 22	£ 14,100	£ -	£ 14,100
Inch Park	15	Palisade security gate / Completed May 22	£ 12,266	£ -	£ 12,266
Inch Park	15	Make safe buildings / Completed Jul 22	£ 20,767	£ -	£ 20,767
Inch Park	15	Refurbish walls - NSL car park area / Due Nov 22	£ 23,409	£ -	£ 23,409
Inch Park	15	Refurbish walls - nursery walled garden / Due Nov 22	£ 19,688	£ -	£ 19,688
Inch Park	15	Refurbish historic cottage / Completed Apr 22	£ 24,887	£ -	£ 24,887
Inch Park	15	Refurbish historic cottage / Due Nov 22	£ 24,536	£ -	£ 24,536
Inch Park	15	Refurbish historic cottage / Due Nov 22	£ 20,062	£ -	£ 20,062
Ellens Glen	16	Refurbish walls / Completed Jan 22	£ 3,850	£ -	£ 3,850
Liberton Park	16	Remediation of walls included in Meadows project / Completed Feb 22	£ 16,600	£ -	£ 16,600
Liberton Park	16	Install active travel path network / Completed Feb 22 inc. Braidburn Valley	£ -	£ -	£ -
Seven Acre Park	16	Refurbish fencing / Completed May 22	£ 45,527	£ -	£ 45,527
St Katherine's Park	16	Refurbish path network / Completed Jan 22 inc. Seven Acre	£ -	£ -	£ -
Brighton Park	17	Perimeter walls - design / specification / Completed Jul 22	£ 9,220	£ -	£ 9,220
Cairntows Park	17	Refurbish fencing / Completed Jan 22 inc. Newcarighall Park	£ -	£ -	£ -
Figgate Park	17	Refurbish boardwalk / Completed Mar 22	£ 16,467	£ -	£ 16,467
Joppa Quarry Park	17	Refurbish path network / Completed Mar 22	£ 125,934	£ -	£ 125,934
Little France Park	17	Remediation gas pipe / Completed May 22	£ 15,730	£ -	£ 15,730
Milton Road	17	Refurbish fencing / Completed Mar 22 inc. Smokey Brae	£ -	£ -	£ -
Newcraighall Park	17	Refurbish fencing / Completed Jan 22	£ 10,481	£ -	£ 10,481
Newcraighall Park	17	Refurbish path network / Completed Mar 22 inc. Joppa Quarry	£ -	£ -	£ -
Smokey Brae	17	Refurbish fencing / Completed Mar 22	£ 78,533	£ -	£ 78,533
Windsor Place	17	Refurbish fencing / Due Nov 22	£ 10,582	£ -	£ 10,582
P&G - City Wide	All	Replace obsolete waste bins phase one / Completed Jan 22	£ 27,909	£ -	£ 27,909
P&G - City Wide	All	Replace obsolete seating / Completed Apr 22	£ 9,665	£ -	£ 9,665
P&G - City Wide	All	Replace obsolete waste bins phase two / Due Nov 22	£ 29,947	£ -	£ 29,947
Total			£ 2,178,054	£ 37,870	£ 2,215,924

## APPENDIX 3 - ASSET INVESTMENT PLANNED

Site	Ward	Project / Status	Parks Capital	Other funding	Estimated Project Value
Cammo Estate	1	Refurbish path network and footbridge / Progress to tender	£ 5,000	£ 5,000	£ 10,000
Ferry Glen	1	Replace bridge / Progress to tender	£ 23,653	£ -	£ 23,653
Ferry Glen	1	Landslip design / Tender	£ 16,000	£ -	£ 16,000
Ferry Glen	1	Landslip remediation / Awaiting design proposals	£ 100,000	£ -	£ 100,000
Pentland Hills Regional Park - Harlaw, Bonaly Threipmuir, (Flotterstone)	2	Upgrade car park areas / Progress to tender - part third party funded	£ 207,642	£ 833,418	£ 1,041,060
Spylaw Park	2	Refurbish walls / Move from revenue	£ 12,000	£ -	£ 12,000
Inverleith Park	5	Master planning project enabling fund / Provisional capital contribution to project	£ 50,000	£ -	£ 50,000
Water Of Leith - Miller Row	5	Refurbish walls / Progress to tender due March 2023	£ 80,000	£ -	£ 80,000
Saughton Park	7	Park renovation / Project balance outstanding	£ 168,287	£ 21,500	£ 189,787
Sighthill Park	7	Refurbish car park surface / Progress to tender	£ 30,000	£ -	£ 30,000
REDACTED	-	REDACTED	£ 240,000	£ -	£ 240,000
Water of Leith - Dells nr Bogmill Rd	8	Landslip remediation / Revise design	£ 20,000	£ -	£ 20,000
Water of Leith - Dells nr Spylaw Rd	8	Landslip remediation / Revise design	£ 80,000	£ -	£ 80,000
Water of Leith - Dells	8	Refurbish rustic bridge / Progress to tender due March 2023	£ 140,000	£ -	£ 140,000
Water of Leith - Dells	8	Replace pipe bridge / Progress to tender due March 2023	£ 40,000	£ -	£ 40,000
Easter Craiglockhart Hill Local Nature Reserve	9	Landslip remediation / Progress to tender - third party funding	£ -	£ 200,000	£ 200,000
Leith Links (East)	13	Master planning project enabling fund / Provisional capital contribution to project	£ 50,000	£ -	£ 50,000
Craigmillar Castle Park	17	Refurbish walls and fencing / Progress to tender	£ 85,000	£ -	£ 85,000
Total			£ 1,347,582	£ 1,059,918	£ 2,305,298



## Park and Greenspace Infrastructure / Asset Improvement

### Project overview

Project Reference	Inch Park01
Site	Inch Park
Ward	15
Lead Officer	Janice Peter

Works / Project Status	Refurbish walls / Completed Mar 22
Value	£31,410
Priority	01

Prior



After





## Park and Greenspace Infrastructure / Asset Improvement

### Project overview

Project Reference

Blackford Glen1

Site

Blackford Glen

Ward

10

Lead Officer

Andrew Law

Works / Project Status

Refurbish path network / Completed Jan 22

Value

£12,820

Priority

01

Prior



After





## Park and Greenspace Infrastructure / Asset Improvement

### Project overview

Project Reference

Abercorn Park1

Site

Abercorn Park

Ward

14

Lead Officer

Scott Thomson

Works / Project Status

Refurbish fencing / Completed Dec 21

Value

£22,684

Priority

01

Prior



After



## Park and Greenspace Infrastructure / Asset Improvement

### Project overview

Project Reference	Lochend Park1
Site	Lochend Park
Ward	14
Lead Officer	Scott Thomson
Works / Project Status	Upgrade drainage / Completed Dec 21
Value	£34,798
Priority	01

Prior



During



After



## Park and Greenspace Infrastructure / Asset Improvement

### Project overview

Project Reference

Inch Park02

Site

Inch Park

Ward

15

Lead Officer

Janice Peter

Works / Project Status

Refurbish storage building roof /

Completed Jun 22

Value

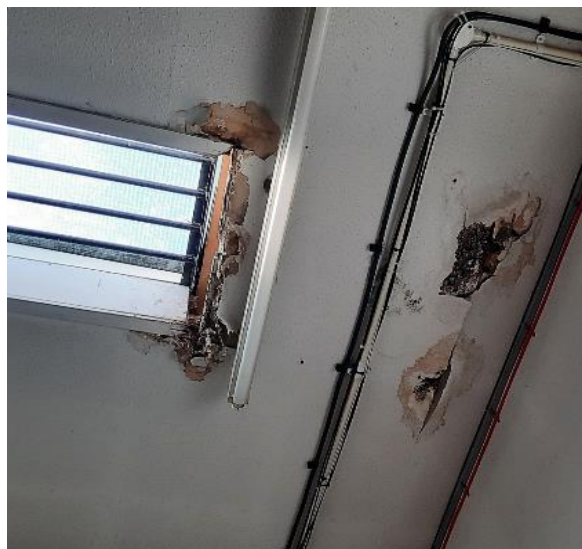
£30,799

Priority

01

Notes Bothy and Boiler House

Prior



After



## Park and Greenspace Infrastructure / Asset Improvement

### Project overview

Project Reference

Inverleith Park3

Site

Inverleith Park

Ward

5

Lead Officer

Ritchie Fraser

Works / Project Status

Refurbish boardwalk / Completed Mar 22

Value

£43,977

Priority

01

Prior



After

